



ACTIVE LOGO

Glass fabric customized for example with your own company logo woven into a high-quality glass fiber wall covering.

SYSTEXX ACTIVE LOGO L65

A wall covering based on glass fabric and customized with your own company logo to display your corporate image on the wall – that's SYSTEXX Active Logo L65.

Thanks to the Jacquard weaving technique, it is possible to incorporate almost any type of image and logo, including non-geometric shapes. The maximum logo width is 800 mm.

SYSTEXX Active Logo L65 is ideal for use in companies, hotels or banks where corporate identity is important. Also in busy areas and buildings or as an eye-catcher in rooms. Use the wall as your business card to communicate your corporate identity.



Reaction-to-fire: B-s1, d0 – extremely flame retardant



Extremely abrasion and scrub-resistant



Resistant to disinfectants and cleaning agents



Suitable for allergy sufferers



Creative paint applications



Non-hazardous to health: Oeko-Tex certified



Wall reinforcing and crack bridging



Impact and perforation resistant



Non-toxic and food-safe



Water vapor permeable

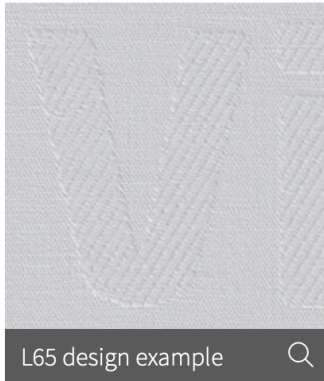


Made in Germany

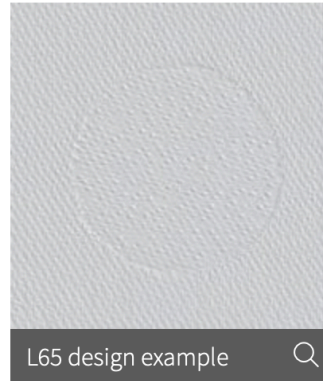
DESIGNS



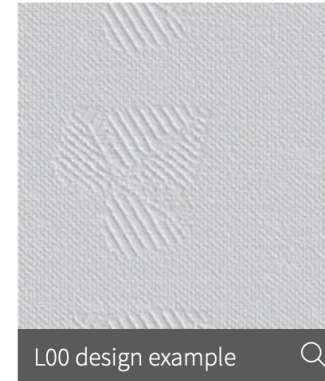
L65 design example



L65 design example



L65 design example



L00 design example



ACTIVE LOGO

Glass fabric customized for example with your own company logo woven into a high-quality glass fiber wall covering.

